

coenro

co-crafting your microbrewery

Used 10hl equipment



Description of the available equipment

Coenco offers a high-quality, used brewery equipment from a brewery established in 2017, which successfully brewed over 1,500 hectoliters annually.

Available equipment

Malt mill (Sommer Maltman 150s) + automatic dosing system + hydrator

10hl semi automatic brewhouse (Coenco) – Build in 2017

Hot water tank 20hl

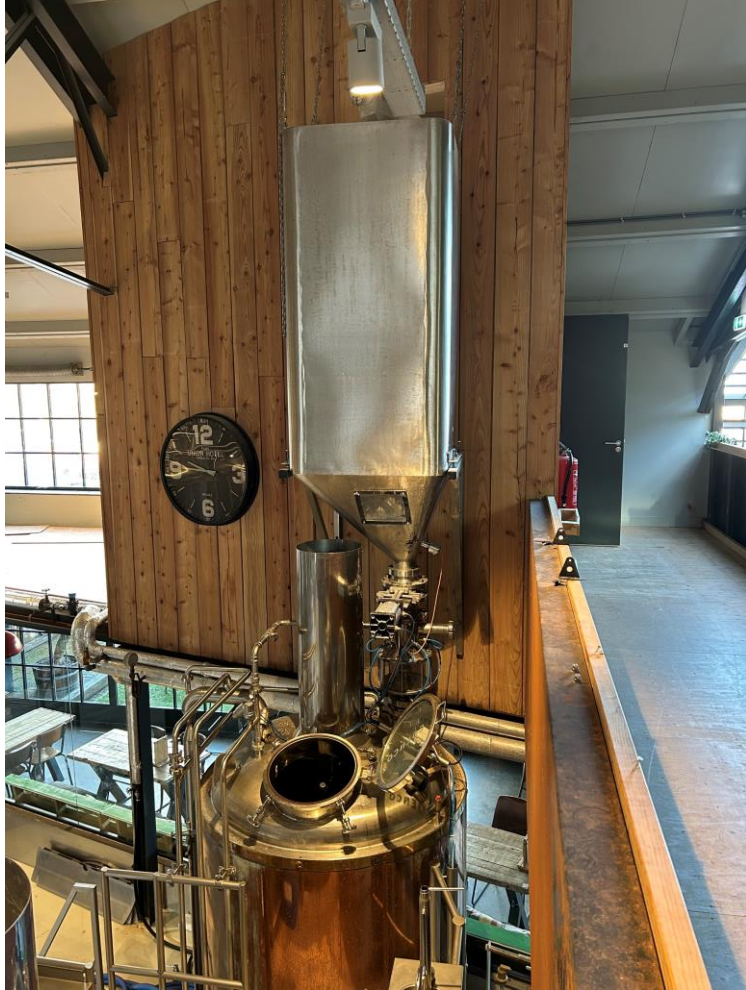
5 x unitanks 10hl (2bar) & 5 x unitanks 20hl (2bar) + platform

Cooling unit (DK Kälteanlagen)

Automatic CIP unit (Coenco)

Air compressor

Automatic malt dosing system



Brewhouse 10hl



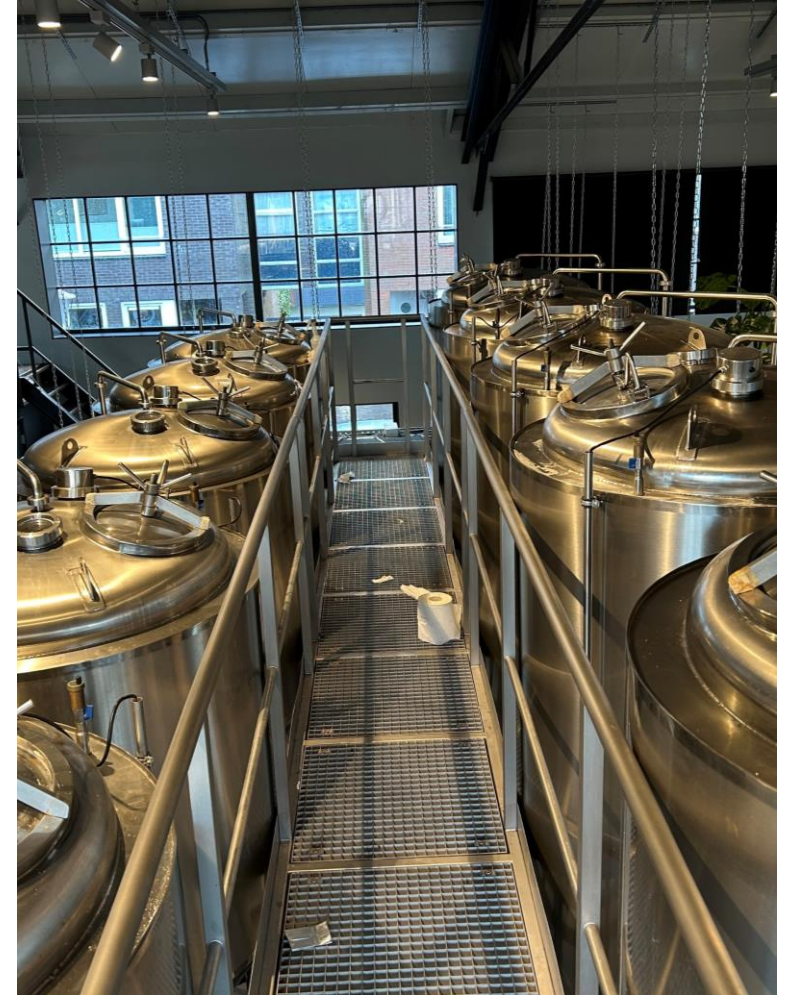
Brewhouse 10hl



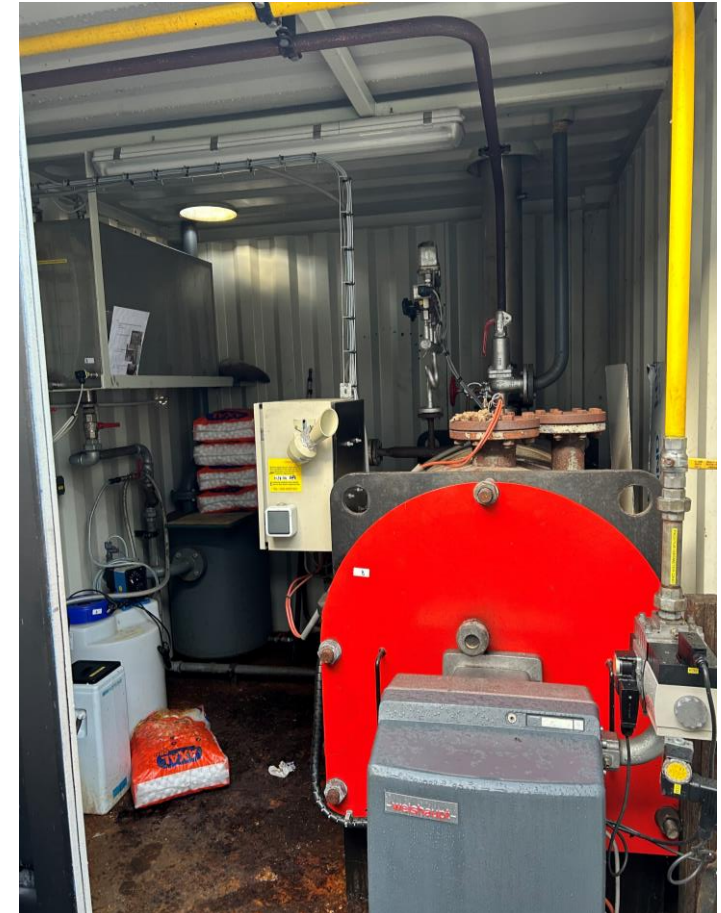
Brewhouse 10hl



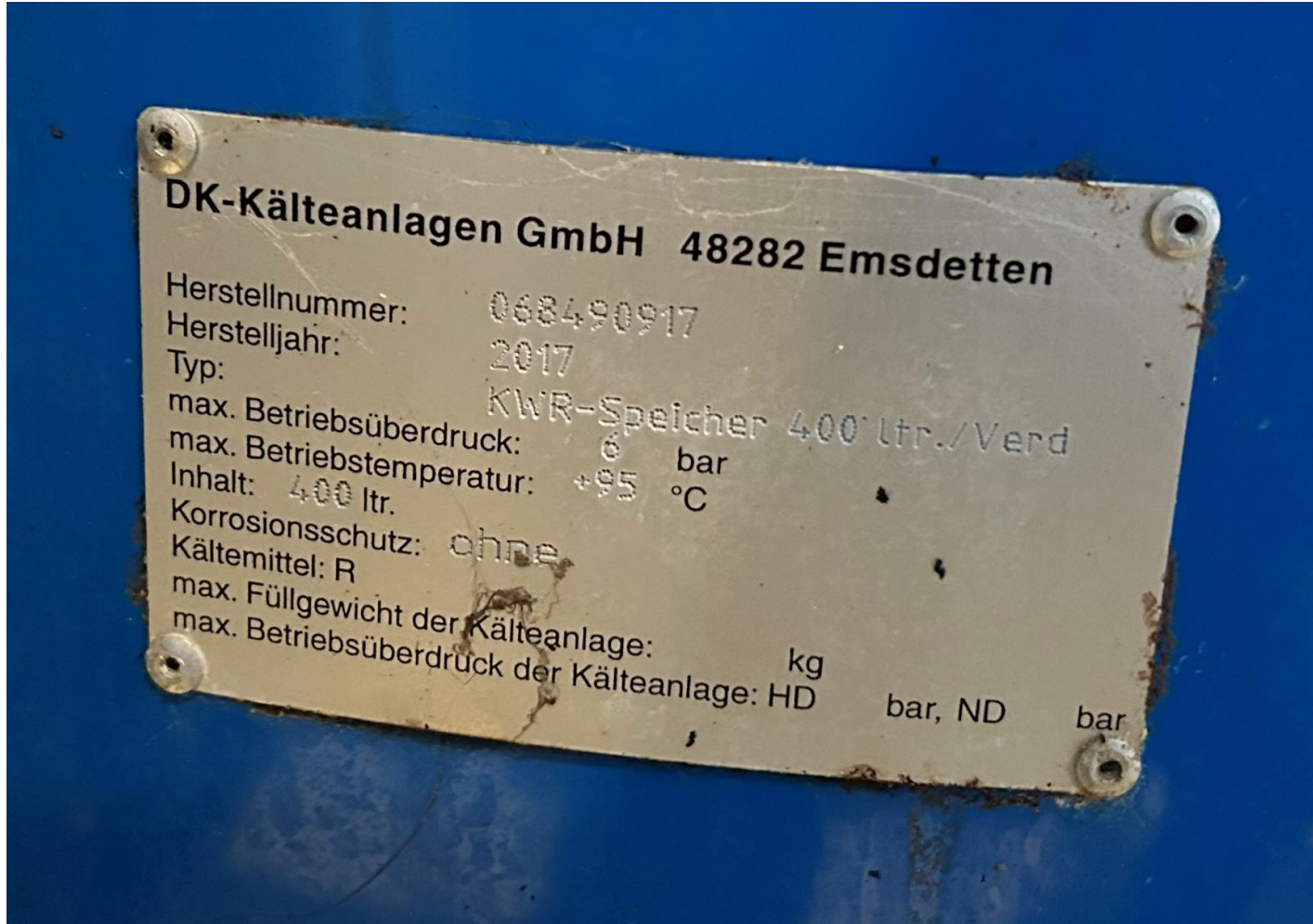
Fermentation tanks



Steam boiler – build in container



Cooling unit



Automatic CIP unit with mobile pump



Pricing

Available equipment	Pricing
Malt mill (Sommer Maltman 150s) + automatic dosing system + hydrator	160.000 €*
10hl semi automatic brewhouse (Coenco) – Build in 2017	
Hot water tank 20hl	
5 x unitanks 10hl (2bar) & 5 x unitanks 20hl (2bar) + platform	
Cooling unit (DK Kälteanlagen)	
Automatic CIP unit (Coenco)	
Air compressor	

* The price is:

- AS IS
- Excl. VAT
- Without disassembly, revision, installation, start-up

Why choose this equipment?

- Access **premium brewing equipment** at a lower price
- **Expert Support:** Partner with Coenco for a reliable, professional setup backed by years of experience in the industry.
- **Working condition:** The equipment is still installed and in working condition
- **Recommended Revision:** Optimize performance with a revision service provided by Coenco to make the equipment function like new.
- **Turnkey Solution:** Coenco can manage the installation and startup, ensuring a seamless process.

Contact us!

Interested in this equipment? Contact us via email! Simply click the yellow button below to send your inquiry.

Sales@coenco.be

coenco

co-crafting your microbrewery

sales@coenco.be

| +32 50 39 59 79

| www.coenco.be